

Grays Harbor County 2027 Comprehensive Land Use Plan

County Planning Commission
September 9, 2025



Project Overview




- New Comprehensive Land Use Plan and development regulations
- Prepare an Environmental Impact Statement (EIS) to comply with State Environmental Policy Act (SEPA) requirements
- Public engagement throughout the process – from visioning, to drafting, to finalizing the Comp Plan



Engagement in key project phases



Project phase	Engagement approach
 Visioning and Draft EIS scoping Jun – Sept 2025	Involve: Visioning and Comp Plan comment periods allow public/stakeholders to share feedback on what they want to see in the future Comp Plan <i>Robust public engagement in the Visioning process is critical to ensure community input informs the new land use plan</i>
Draft Comp Plan and regulations and Draft EIS comment periods Feb - Mar 2026	Involve: Public comment periods allow public/stakeholders to share their desires, values, ideas
Final Comp Plan and regulations and Final EIS Apr - Sept 2026	Inform: Share final EIS and Comp Plan with public/stakeholders



Public Engagement Results

Engagement Overview

576 people reached

In-person events

- 4 events
- 53 attendees

Online survey

- 526 survey responses
- Survey concluded Aug. 15



[Link to interactive map](#)

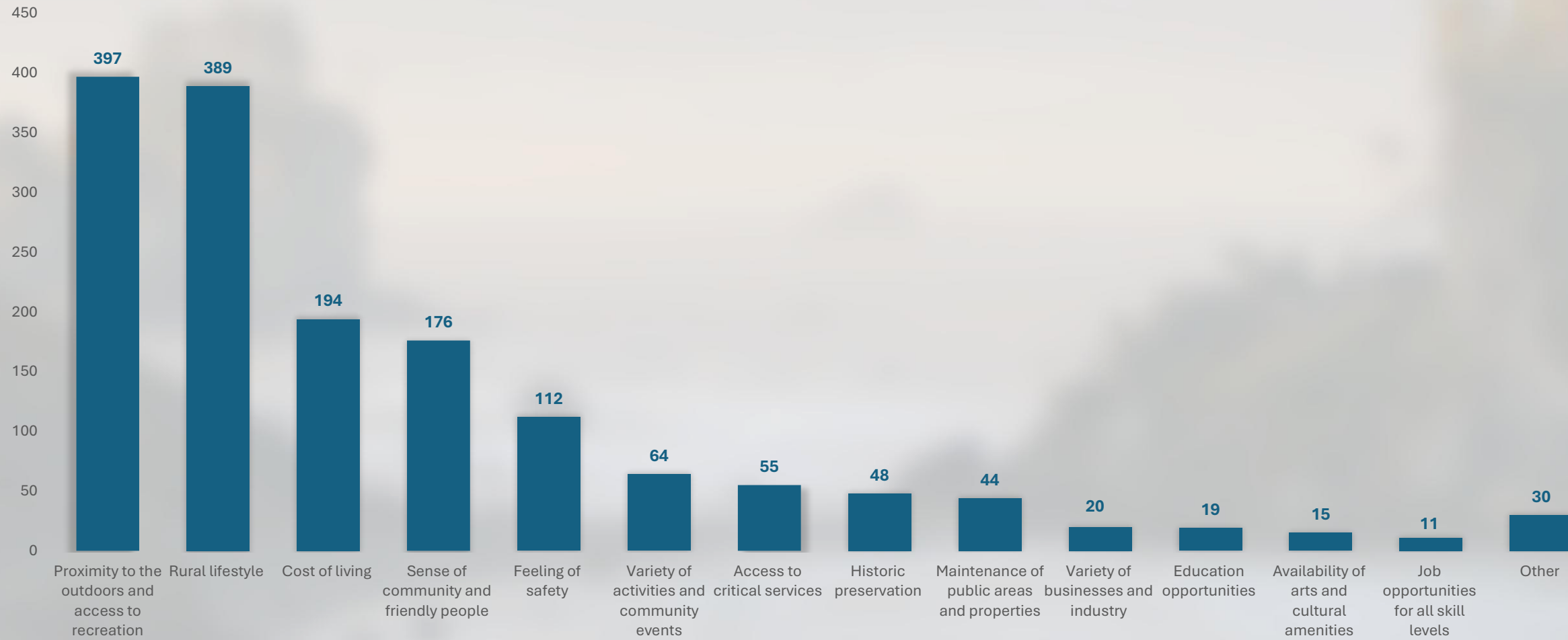
What's your connection to Grays Harbor County?



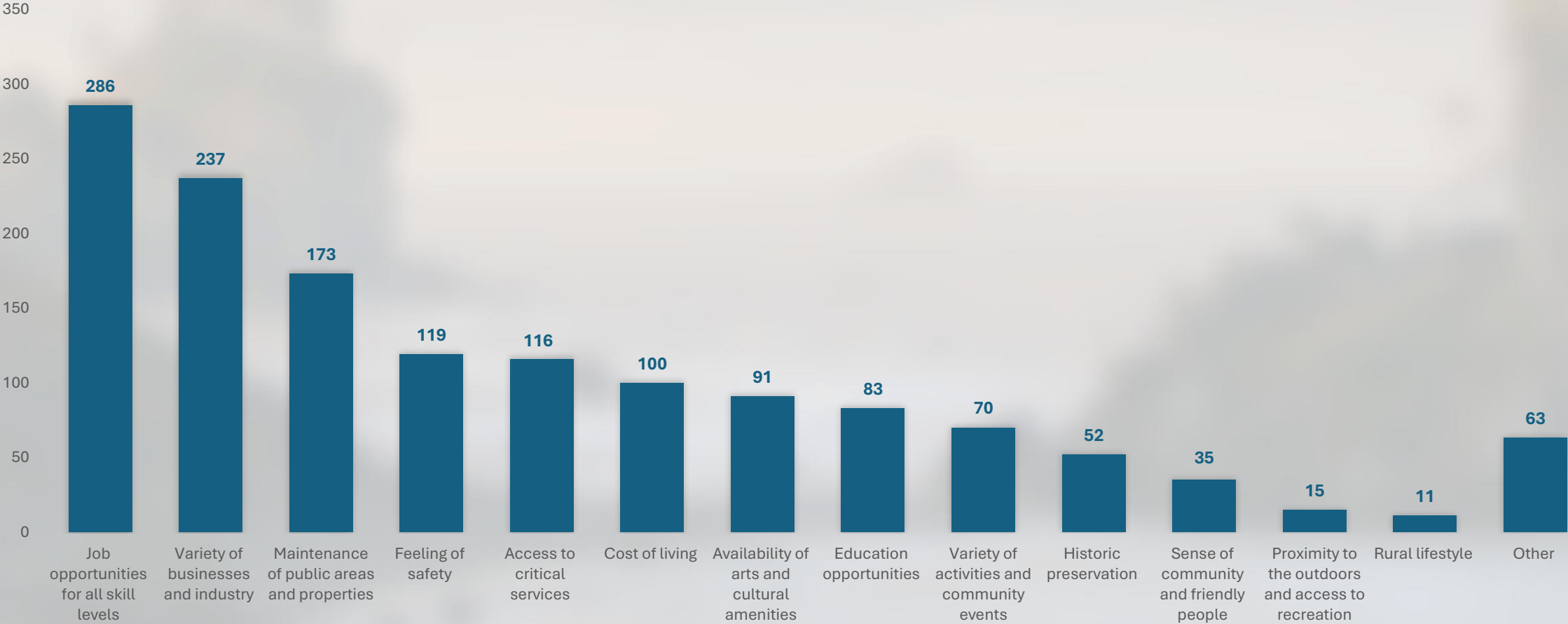
1854



When you think of Grays Harbor County today, what are the top 3 strengths?



When you think of Grays Harbor County today, what are the top 3 weaknesses?

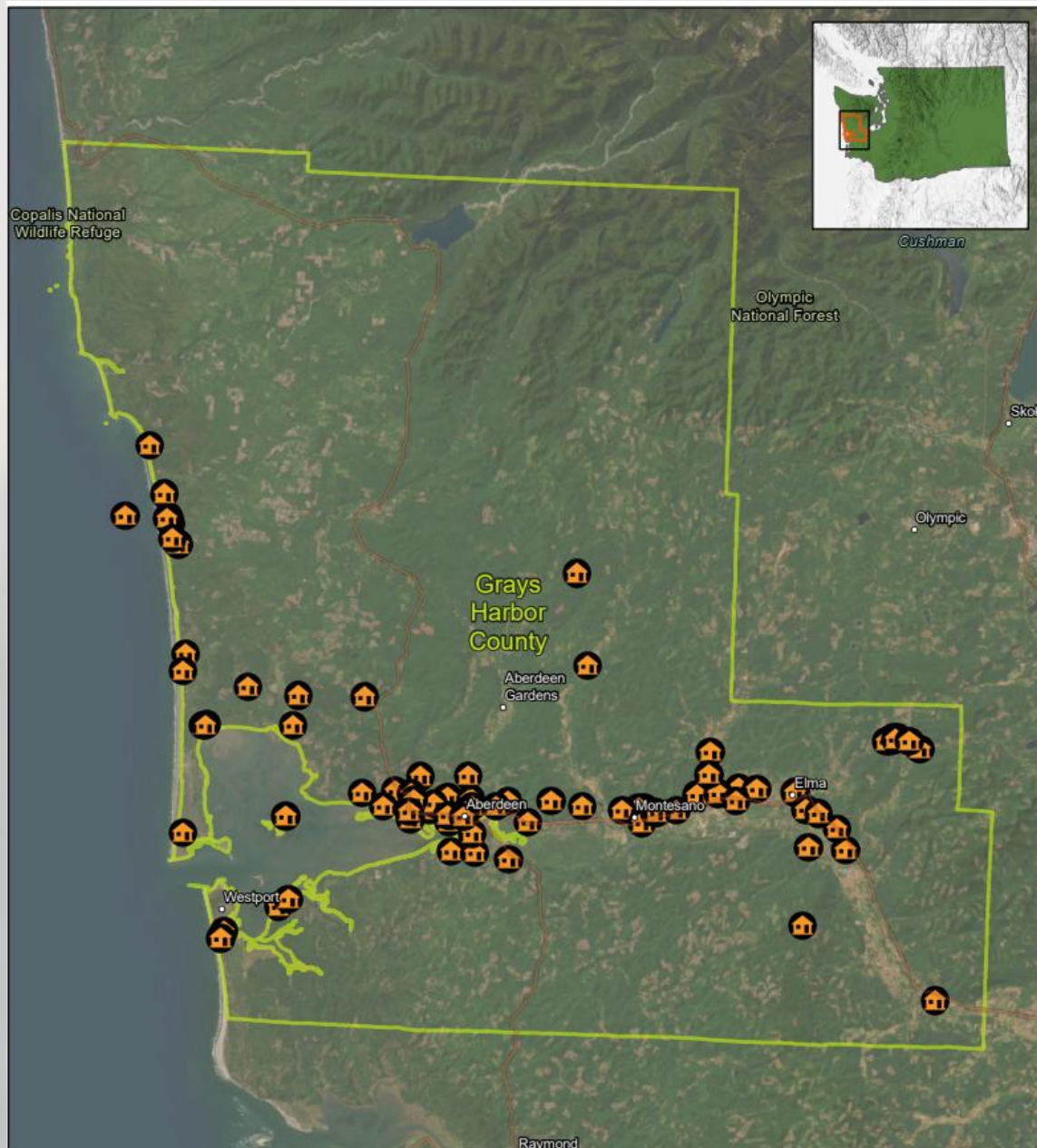


When you envision the future of Grays Harbor County, what would you like to see?*



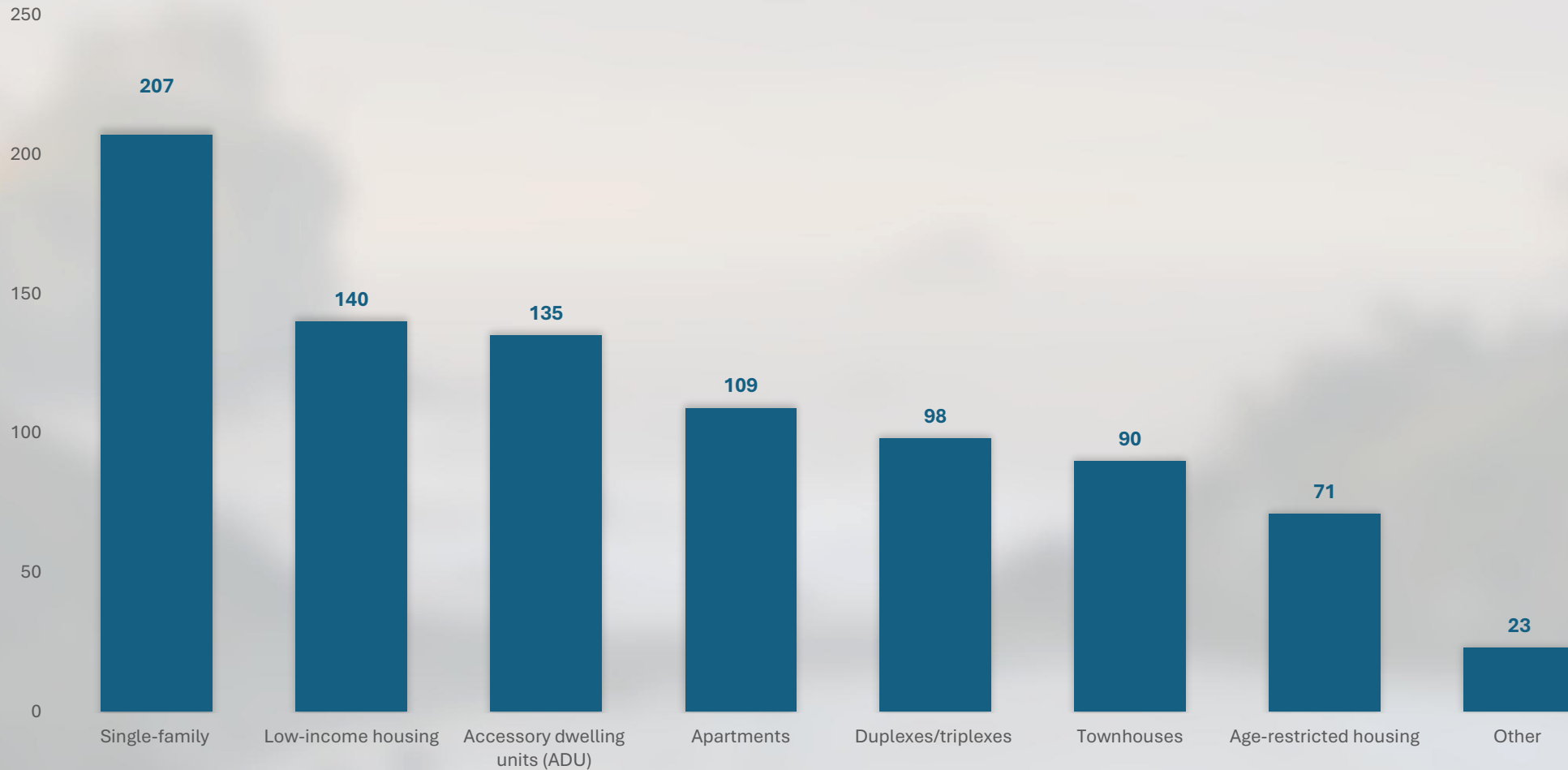
- Preservation of rural lifestyle
- Affordable and variety of housing across income levels
- More job growth and living wage jobs
- Opportunities for economic development and revitalization
- Improved public infrastructure and services
- Protected nature and wildlife
- Increased public safety, and solutions for crime and homelessness
- More community gathering spaces and activities, especially youth focused
- More transportation options, including non-motorized
- Improved internet services and access
- Support for thoughtful tourism and coastal development
- Deregulation and more government transparency
- Community-led decision making

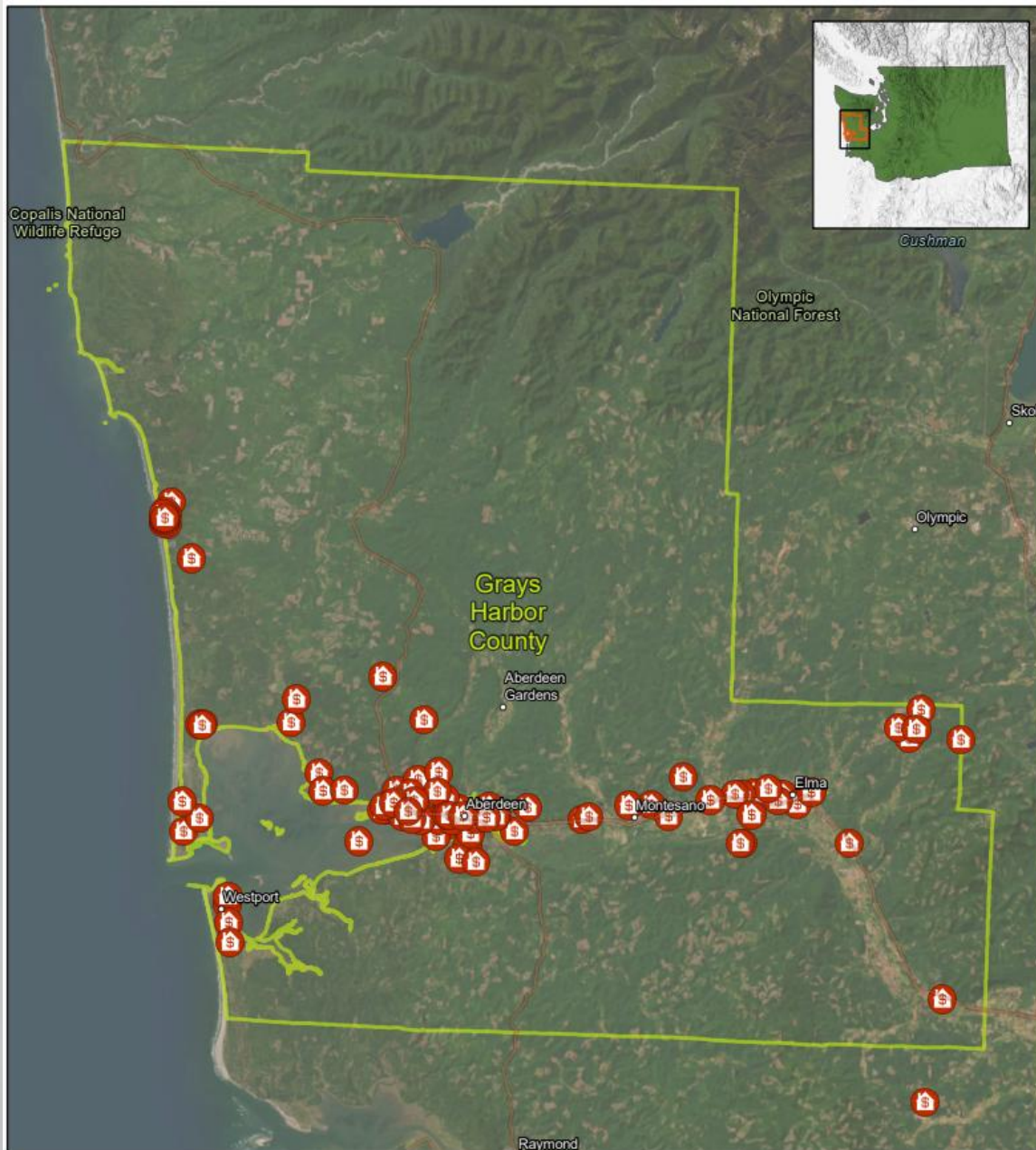
**open ended question*



61% of respondents think more housing is needed.

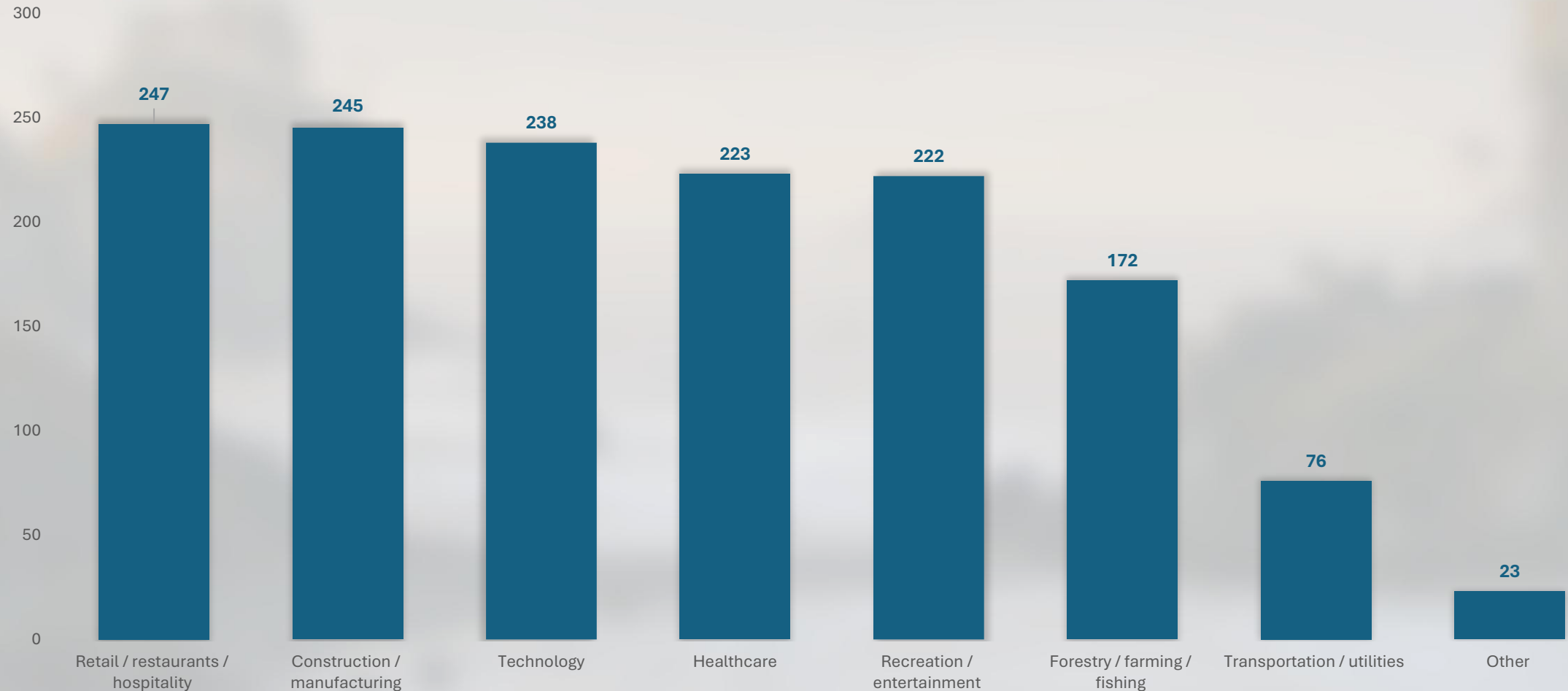
What types of housing would you like more of in Grays Harbor County?

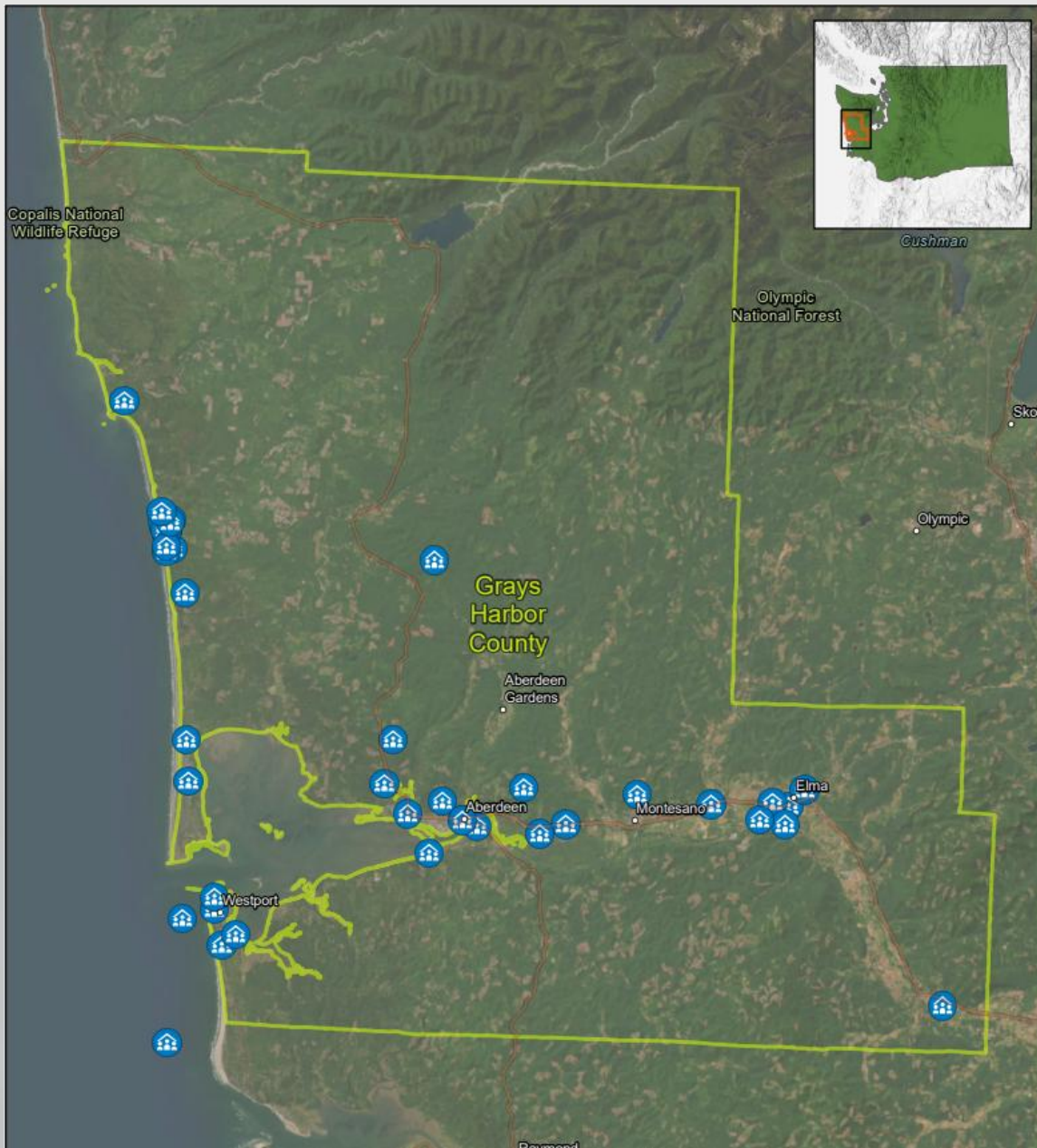




**89% of respondents
think more jobs and
businesses are needed.**

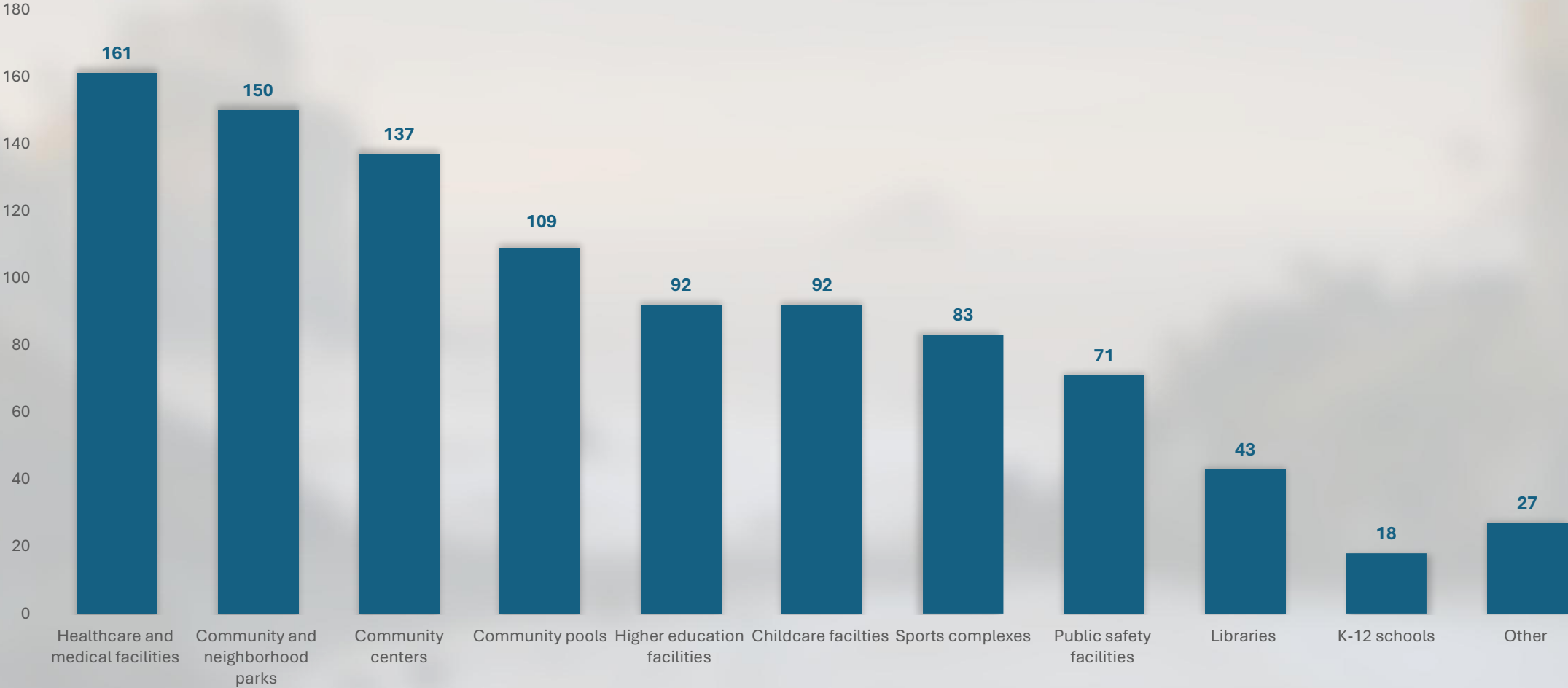
What types of jobs and businesses would you like more of in Grays Harbor County?





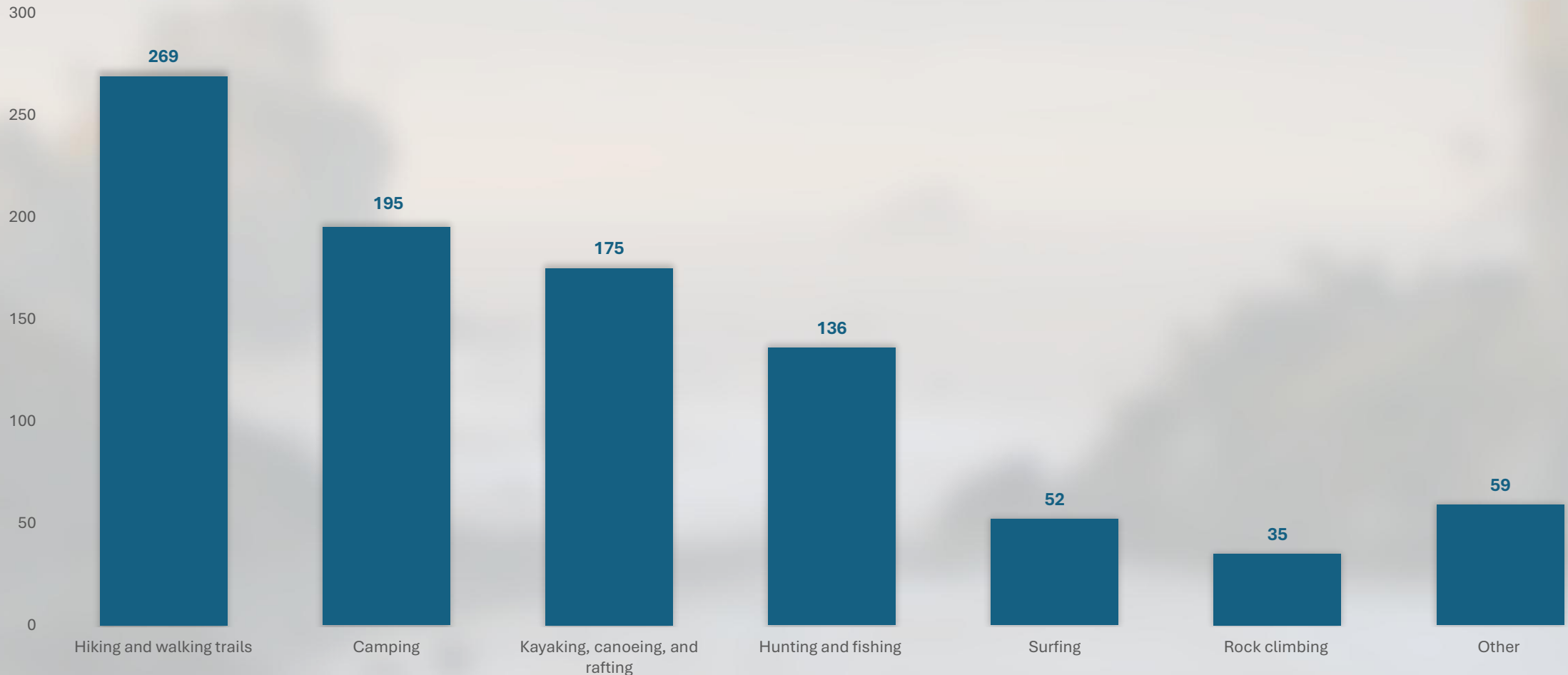
64% of respondents think more community facilities are needed.

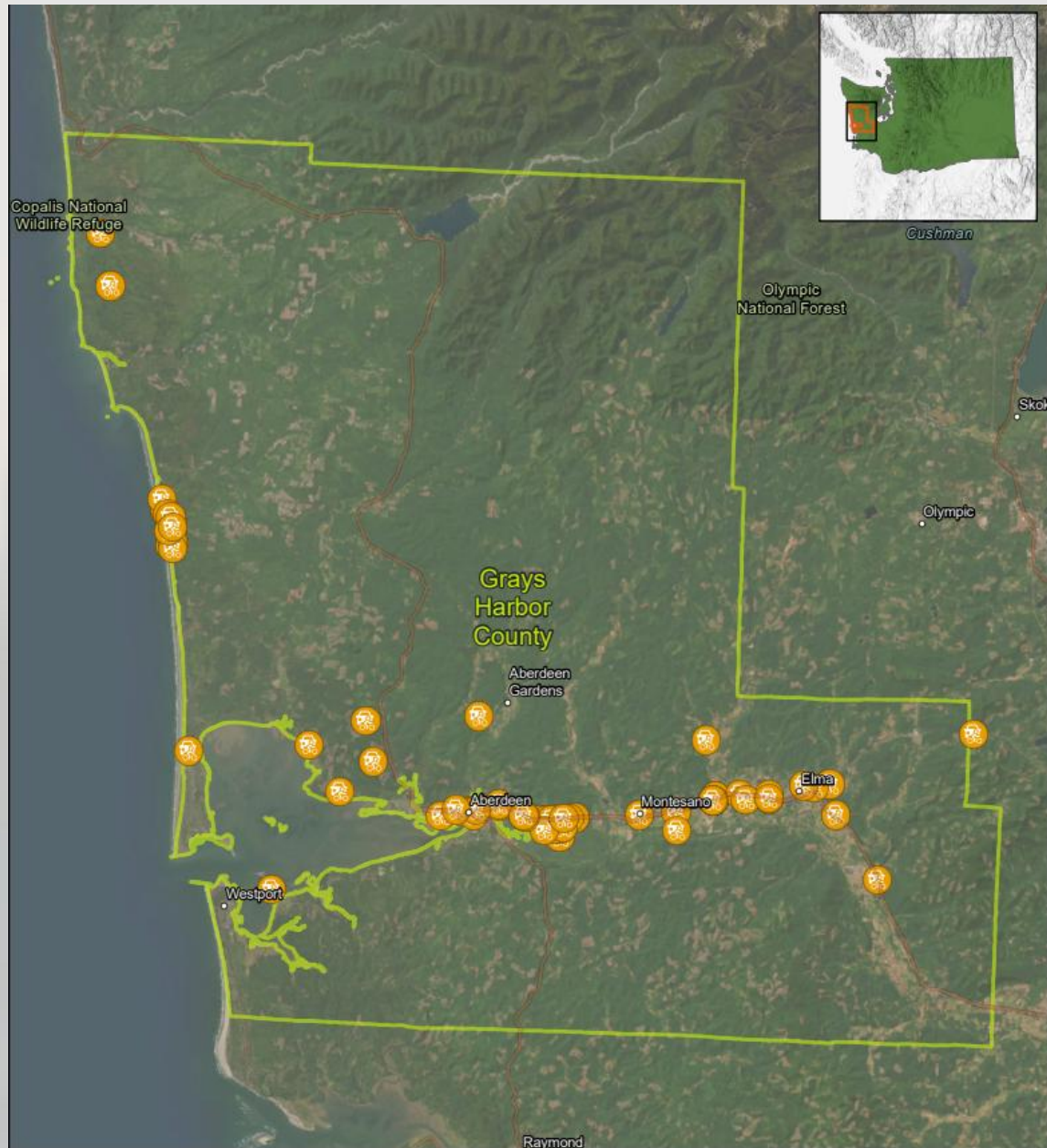
What types of community facilities would you like more of in Grays Harbor County?



63% of respondents think more outdoor recreation is needed.

What types of outdoor recreation would you like more of in Grays Harbor County?

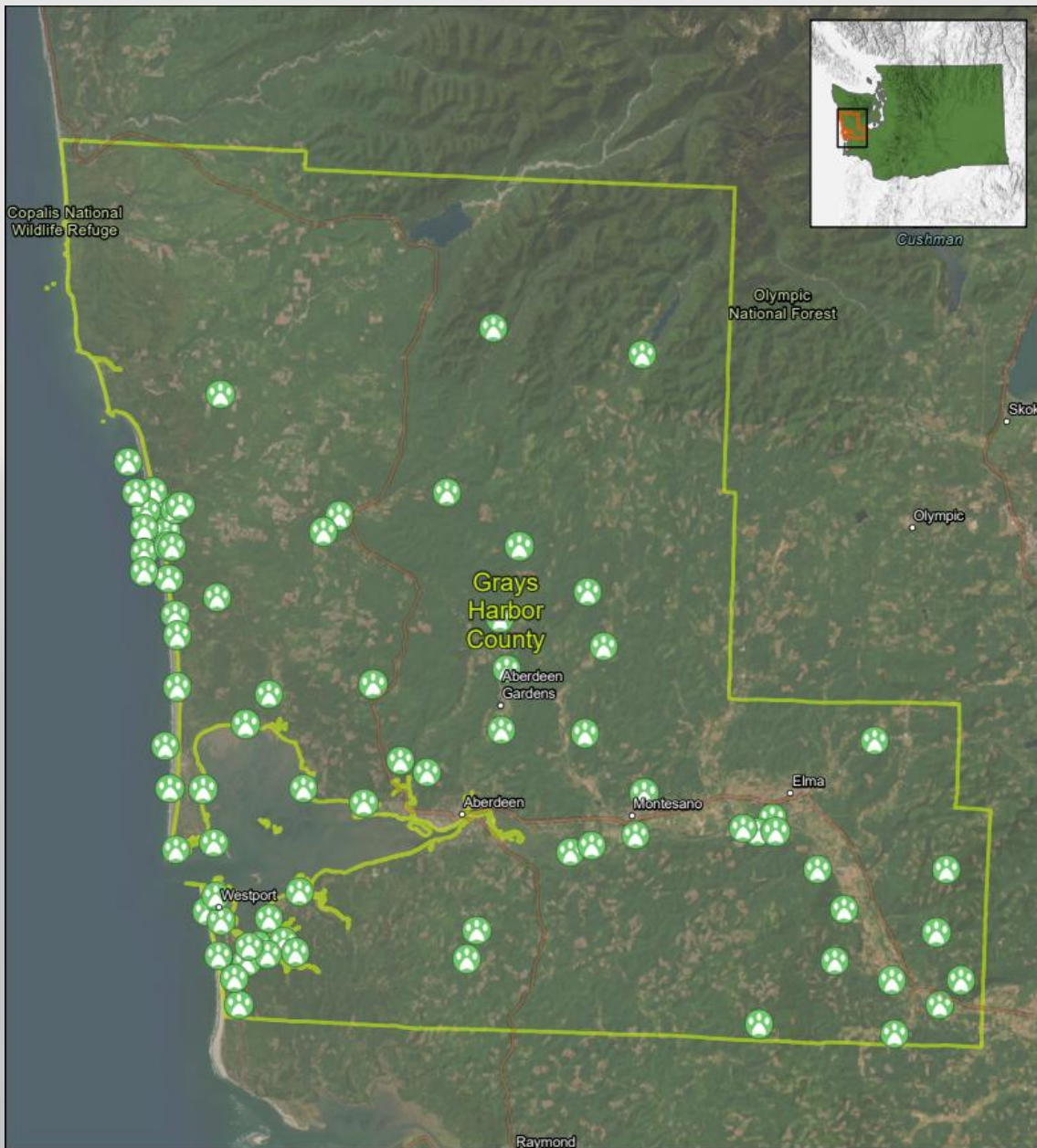




**65% of respondents think
transportation
improvements are needed.**

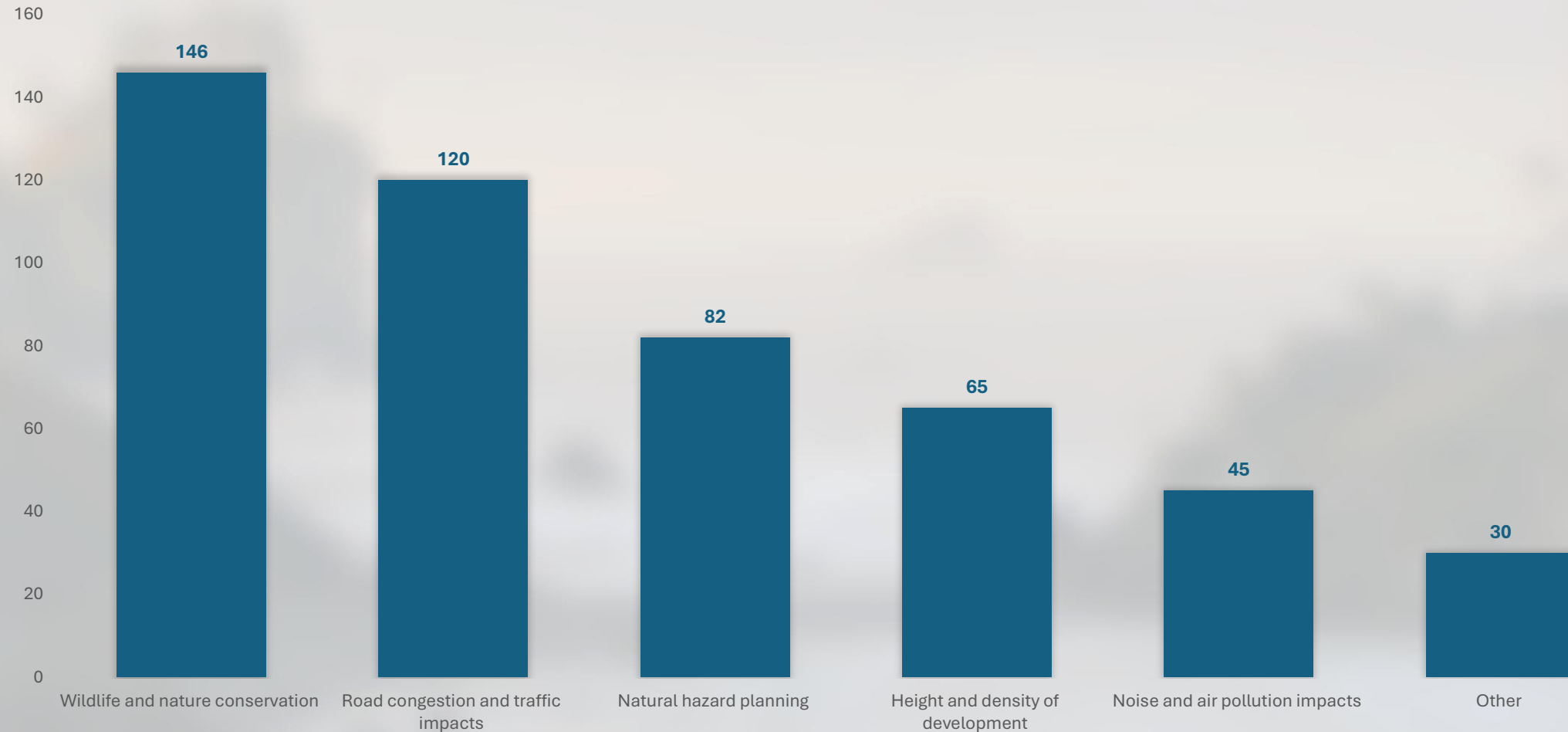
What are the most important transportation issues in Grays Harbor County?





81% of respondents think areas should be preserved for wildlife and nature.

What types of regulations is most important to you?



Are there other topics you would like us to consider?*



- **Preserve rural character:** Desire to maintain rural environment, including large parcels
- **Environmental regulation:** Interest in balancing nature conservation with development
- **Road safety & traffic:** Support for reducing congestion and increasing road safety
- **Flooding & water levels:** Support for proactive planning and tsunami infrastructure
- **Outdoor access:** Desire for more trails, bike paths, and public recreation areas
- **Tourism development:** Support for beautification and strategic planning to attract visitors
- **Trade education:** Desire for local vocational programs
- **Business support:** Interest in new policies and regulations to attract and retain a variety of businesses, especially small and local
- **Community amenities:** Support for community centers, amenities for youth/families, venues, parks, and more

**open ended question*

Are there other topics you would like us to consider?* (continued)



- **Affordable housing:** Need for a variety of housing that serves residents and workers
- **Vacant/rundown properties:** Desire to revitalize rundown and vacant properties
- **Homelessness:** Concerns about homeless encampments, drug use, and safety
- **Mental health & addiction:** Interest in more mental health and addiction services
- **Hospital access:** Interest in more hospitals, especially for the aging population
- **Emergency services:** Support for more police, fire, and medical services
- **Internet access:** Interest in high-speed broadband for rural living and economic growth

**open ended question*



Community Visioning

Community Vision



What is a community vision?

- A community vision is a shared understanding of what a community wants to be like in the future, serving as a guide for strategic planning efforts and decision-making. It is a collaborative process where the community explores their aspirations and priorities for the future.

Visioning efforts will:

- Use meaningful community engagement to understand the needs and challenges of the area
- Align land use alternatives with the values and goals of the community
- Build community relationships to support implementation of the Comprehensive Land Use Plan
- Develop a community supported vision for long-term planning

Vision Statement - draft



Grays Harbor County will be a vibrant community that preserves its rural character and local identity while embracing new opportunities and well-planned growth. We highly value our beautiful natural surroundings and recognize the importance of balancing land uses to protect environmentally sensitive areas while supporting development. A variety of housing options, living wage jobs, and shops, services and community spaces will make Grays Harbor County a pleasant and thriving place to live, work and visit. A mix of vehicle, bicycle, pedestrian, and transit options will provide efficient and accessible connections throughout the area. We will achieve our vision through community-guided decision making, by working closely with residents, businesses, and project partners.



Next steps

Create community vision (Sept. – Oct. 2025)

- Finalize community vision statement

Develop land use alternatives (Fall 2025)

- Based on community vision
- Planning Commission worksessions

Thank you

Jacobs

